



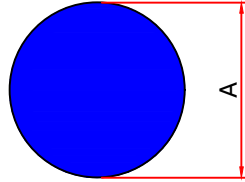
JHALANI EXTRUSION

(A UNIT OF P.R.C.M. METAL)

C-36, Riico Industrial Area, Neemrana, District : Alwar, (Raj.) 301705
Contact : 9716031516, 09953239231 E-Mail : jhalaniextrusion@yahoo.com

ANGLE, RODS, PIPE AND BARS

GEOMETRICAL



ROD

SR. NO.	SEC. NO.	A	WEIGHT/12'
1	1101	6.00	0.280-0.300
2	1102	8.90	0.615-0.650
3	1103	9.30	0.655-0.680
4	1104	10.90	0.920-0.950
5	1105	9.60	0.715-0.750
6	1106	9.90	0.760-0.780
7	1107	11.00	0.938-0.950
8	1108	11.60	1.450-1.080
9	1109	10.50	0.855-0.900
10	1110	11.20	0.975-1.00
11	1111	11.80	1.080-1.100
12	1112	13.70	1.450-1.475
13	1113	16.70	2.150-2.200
14	1114	14.60	1.650-1.700
15	1115	15.50	1.863-1.900
16	1116	12.20	1.150-1.200
17	1117	17.50	2.375-2.400
18	1118	16.00	1.985-2.050
19	1119	6.40	0.300-0.350
20	1120	6.90	0.370-0.400
21	1121	7.50	0.435-0.470
22	1122	7.95	0.500-0.540
23	1123	8.50	0.560-0.600
24	1124	13.00	1.300-1.330
25	1125	13.50	1.400-1.445
26	1126	14.30	1.580-1.610



JHALANI EXTRUSION

(A UNIT OF P.R.C.M. METAL)

C-36, Riico Industrial Area, Neemrana, District : Alwar, (Raj.) 301705

Contact : 9716031516, 09953239231 E-Mail : jhalaniextrusion@yahoo.com

ANGLE, RODS, PIPE AND BARS

GEOMETRICAL



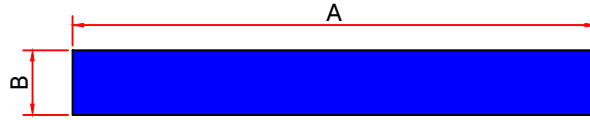
FLAT BAR

SR. NO.	SEC. NO.	A	B	WEIGHT/12'
1	1000	25.00	5.00	1.235
2	1001	19.00	6.00	1.126
3	1002	50.00	10.00	4.941
4	1003	100.00	10.00	9.882
5	1004	50.00	12.00	5.929
6	1005	12.70	5.00	0.627
7	1006	30.00	10.00	2.964
8	1007	25.00	6.00	1.482
9	1008	48.00	5.00	2.371
10	1009	100.00	6.00	5.929
11	1010	125.00	10.00	12.352
12	1011	80.00	10.00	7.905
13	1012	25.00	2.00	0.4941
14	1013	65.00	12.00	7.707
15	1014	65.00	10.00	6.423
16	1015	40.00	6.00	2.371
17	1016	60.00	6.00	3.557
18	1017	40.00	10.00	3.952
19	1018	125.00	12.00	14.823
20	1019	20.00	10.00	1.976
21	1020	100.00	12.00	11.858
22	1021	25.00	10.00	2.47
23	1022	60.00	10.00	5.929
24	1023	13.00	11.00	1.413
25	1024	150.00	6.00	8.893
26	1025	38.00	4.50	1.689



ANGLE, RODS, PIPE AND BARS

GEOMETRICAL



FLAT BAR

SR. NO.	SEC. NO.	A	B	WEIGHT/12'
27	1026	125.00	6.00	7.411
28	1027	80.00	6.00	4.743
29	1028	50.00	6.00	2.964
30	1029	150.00	10.00	14.823
31	1030	36.00	6.00	2.134
32	1031	75.00	6.00	4.446
33	1032	17.00	4.00	0.671



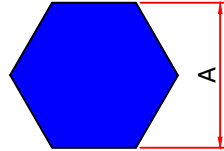
SQUARE BAR

SR. NO.	SEC. NO.	A	WEIGHT/12'
1	1050	6.35	0.400-0.600
2	1051	9.00	0.800-1.00
3	1052	10.00	0.988-1.100
4	1053	15.00	2.225-2.400
5	1054	20.00	3.950-4.100
6	1055	25.00	6.176-6.400



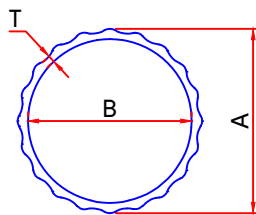
ANGLE, RODS, PIPE AND BARS

GEOMETRICAL



HEXA-ROD

SR. NO.	SEC. NO.	A	WEIGHT/12'
1	1172	12.70	1.375-1.475
2	1173	19.00	3.00-3.100
3	1174	18.00	2.80-2.90
4	1175	17.80	2.70-2.80
5	1176	17.50	2.60-2.70
6	1177	22.00	4.10-4.20
7	1178	24.00	4.90-5.00
8	1179	27.00	6.20-6.30
9	1180	22.00	4.10-4.20



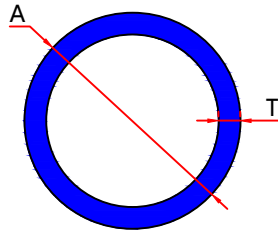
FRUTED ROUND PIPE

SR. NO.	SEC. NO.	A	B	T	WEIGHT/12'
1	1451	15.00	9.20	2.50	0.90-1.10
2	1452	19.00	17.50	0.75	0.50-0.70
3	1453	25.00	23.60	0.70	0.55-0.70
4	1454	28.00	26.40	0.80	0.90-1.00
5	1455	28.00	26.60	0.70	0.80-0.90



ANGLE, RODS, PIPE AND BARS

GEOMETRICAL



ROUND PIPE

SR. NO.	SEC. NO.	A	T	WEIGHT/12'
1	1401	11.00	1.00	0.310-0.500
2	1402	12.00	1.00	0.340-0.370
3	1403	21.00	2.00	1.180-1.300
4	1404	24.80	1.00	0.740-0.850
5	1405	24.80	1.40	1.00-1.200
6	1406	25.00	1.10	0.815-1.050
7	1407	25.00	1.70	1.300-1.500
8	1408	19.00	1.50	0.815-1.00
9	1409	19.00	2.00	1.055-1.300
10	1410	30.00	1.10	1.00-1.20
11	1411	30.00	1.50	1.30-1.50
12	1412	30.00	1.70	1.50-1.70
13	1413	50.00	1.60	2.40-2.70
14	1414	50.00	2.00	2.980-3.20
15	1415	60.30	1.50	2.740-3.00
16	1416	76.00	1.27	2.950-3.150
17	1417	22.20	1.20	1.20-1.30
18	7019	12.00	1.70	0.465
19	7020	15.00	1.75	0.680
20	7005	14.70	1.10	0.490
21	7005	14.70	1.20	0.560
22	7064	25.00	0.65	0.600
23	7065	38.00	0.70	0.750
24	7082	20.70	4.00	2.060



JHALANI EXTRUSION

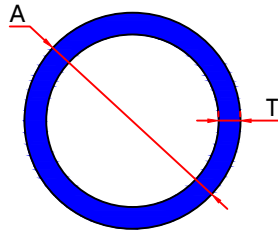
(A UNIT OF P.R.C.M. METAL)

C-36, Riico Industrial Area, Neemrana, District : Alwar, (Raj.) 301705

Contact : 9716031516, 09953239231 E-Mail : jhalaniextrusion@yahoo.com

ANGLE, RODS, PIPE AND BARS

GEOMETRICAL



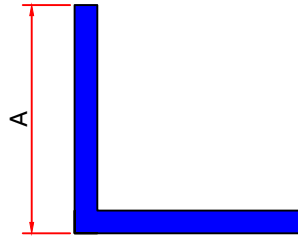
ROUND PIPE

SR. NO.	SEC. NO.	A	T	WEIGHT/12'
25	7102	22.00	0.75	0.480
26	7107	9.00	0.65	0.160
27	7107	9.00	0.55	0.145
28	7119	16.70	0.75	0.350
29	7137	45.00	3.00	3.870
30	7167	10.50	1.80	0.475
31	7244	30.00	1.00	0.790
32	7244	30.00	0.54	0.500
33	7295	18.00	1.00	0.765
34	7317	42.00	1.60	2.120
35	6099	162.00	5.00	
36	6125	82.00	3.00	12.245
37	NS-53	84.50	2.00	5.720



ANGLE, RODS, PIPE AND BARS

GEOMETRICAL



EQUAL ANGLE

SR. NO.	SEC. NO.	A	T	WEIGHT/12'
1	2001	19.00	2.00	0.700-0.90
2	2002	25.00	2.00	0.950-1.100
3	2003	25.00	2.50	1.175-1.300
4	2004	25.00	3.00	1.400-1.600
5	2005	30.00	3.00	1.690-1.900
6	2006	30.00	3.50	1.955-2.200
7	2007	38.00	2.00	1.450-1.700
8	2008	38.00	2.50	1.800-1.950
9	2009	38.00	3.20	2.330-2.500
10	2010	38.00	4.00	2.850-3.00
11	2011	38.00	5.00	3.500-3.700
12	2012	40.00	3.00	2.280-2.500
13	2013	40.00	4.00	3.00-3.300
14	2014	50.00	3.00	2.873-3.00
15	2015	50.00	4.00	3.79-3.90
16	2016	50.00	5.00	4.695-4.900
17	2017	75.00	3.80	4.500-4.800



ANGLE, RODS, PIPE AND BARS

GEOMETRICAL



UNEQUAL ANGLE

SR. NO.	SEC. NO.	A	B	T	WEIGHT/12'
1	2101	38.00	25.00	2.00	1.20-1.350
2	2102	38.00	25.00	3.00	1.77-2.00
3	2103	38.00	25.00	4.00	2.300-2.50
4	2104	38.00	25.00	4.50	2.50-2.70
5	2105	50.00	25.00	3.00	2.10-2.40
6	2106	53.00	16.00	1.75	1.10-1.40
7	2107	60.00	40.00	2.00	1.90-2.20
8	2108	75.00	50.00	6.00	7.00-7.30